

# Whitney & Son, Inc.

95 Kelly Avenue  
Fitchburg, MA 01420

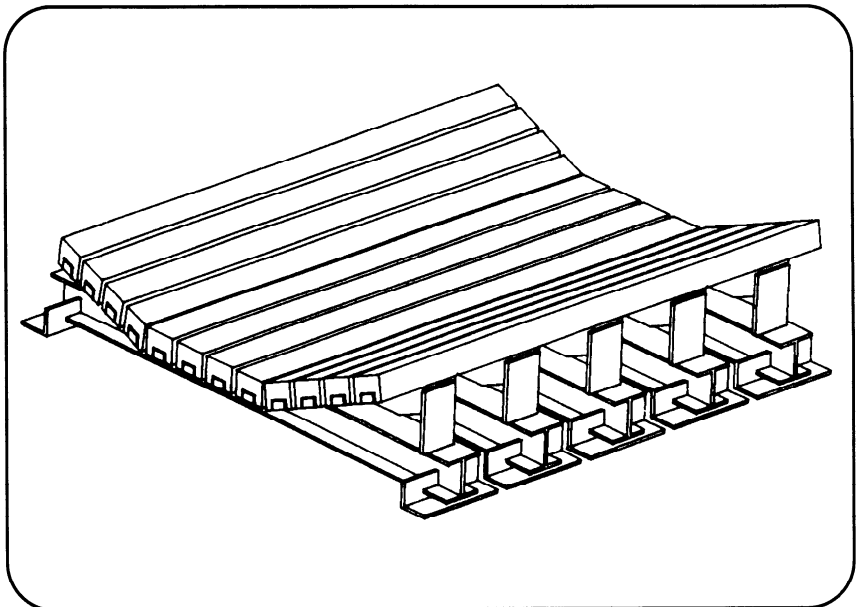
978-343-6353  
Toll Free 800-245-5472  
Fax 978-343-6586

## *Impact System*

Whitney & Son Impact System is the best in the industry. The system was designed by plant people for plant people. The Whitney & Son Impact System is rugged, simple and built to your specifications.

Here are some of the advantages of using the Whitney & Son Impact System:

- Custom built to your, specifications
- Rugged design I-Beam construction
- Excellent grade of impact bars
- Easy installation. Do not have to remove belt
- Reduce maintenance of skirtboards
- Reduce spillage
- Shorter lead times on delivery
- Reduce belt damage by preventing punctures and tears which are more common to conventional idler systems.
- Competitive pricing because we manufacture our system at our Fitchburg Warehouse.



For durability and long life specify Whitney & Son Impact System. We will build a system to match your specific application.

Give us a call, we will be happy to provide you with more information.

Your Whitney & Son, Inc. Representative is:

# Impact Bar Worksheet

## EXISTING IDLER SPECIFICATIONS

Idler information necessary to ensure proper installation of Whitney & Son Impact Bar System.

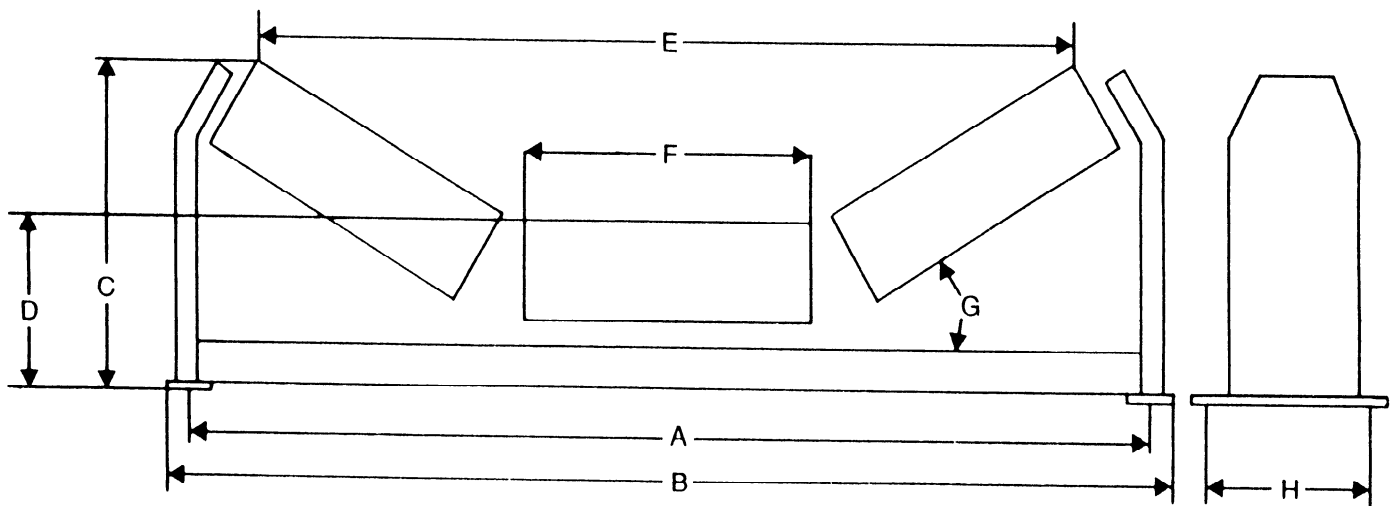
Customer/Project Name: \_\_\_\_\_

Conveyor Data:

Manufacturer: \_\_\_\_\_

Conveyor Length: \_\_\_\_\_

Material Conveyed: \_\_\_\_\_



DIMENSIONS:

IDLER MANUFACTURER:

A. Bolt Centers: \_\_\_\_\_"

B. Outside Framework: \_\_\_\_\_"

C. Height: \_\_\_\_\_"

D. Height: \_\_\_\_\_"

E. Width: \_\_\_\_\_"

F. Length: \_\_\_\_\_"

G. Troughing Degree: \_\_\_\_\_°

H. Bolt Centers: \_\_\_\_\_"

\_\_\_\_\_

Part Number:

\_\_\_\_\_

Belt Width:

\_\_\_\_\_

Drive Type:

Drive HP: \_\_\_\_\_

Drive Speed: \_\_\_\_\_

Contact Person: \_\_\_\_\_

Phone: \_\_\_\_\_